

Threads n Scissors

Wing Needle Lace Embroidery

Note:—If your needle moves when you switch your machine on, don't put the wing needle in until your machine is switched on and the needle has adjusted itself.

If you are unsure if your machine can take a wing needle, please check with your dealer first.

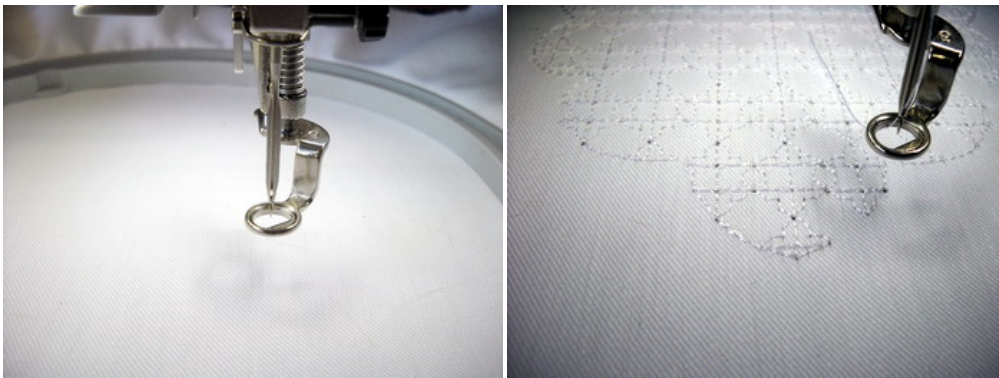
When using a wing needle, please use an embroidery foot with a biggish hole.

The Bernina Artista tear drop foot does not work with the wing needle so its suggested that the no 9 darning foot or the no 15 embroidery foot is used.

I used the no 9 darning foot on my Bernina Artista to stitch out the wing needle designs.

Now to Make Wing Needle Fabric Lace

Hoop 2 layers of water soluble with you piece of fabric. Load your design on your machine. Change the needle to the wing needle. Put your hoop into the machine and stitch the first color. Use a color of your choice for this step.



Materials

Water Soluble Stabilizer

Wing Needle

Fabric
(suggested fabric: light weight cotton, chiffon or any other light weight fabric)

Threads n Scissors

The wing needle is a broad flat needle and punctures the fabric as it stitches creating a beautiful delicate lacey area. Once the first color is done, remove the wing needle and put back the embroidery needle. Stitch out the rest of the design.

Actual Photo



I scanned the stitchout so you can see the lacey effect a bit better



Enjoy Your Inspiration!!!